

Get the facts about Glaucoma

The Glaucoma Service at Harper's Point Eye Associates offers comprehensive consultations and long-term care for all forms of glaucoma, including medical, laser, and surgical treatment. We utilize computerized optic disc nerve fiber layer and visual field analysis available using state-of-the-art perimetry. Our State of the art electronic medical records system allows our doctors to immediately access your test data from any point in or away from our office. Dynamic Contour Tonometry, which is considered to be the most precise method of eye pressure measurement, is the standard in our practice. Such tests can lead to early treatment before obvious vision problems materialize.

The Glaucoma and Diabetes Eye Institute Harper's Point Eye Associates is recognized as a regional center for glaucoma research and management where many area eye doctors refer their patients for glaucoma care. We have published glaucoma research papers and lecture nationally on glaucoma management. Dr. Kirstein is a member of the prestigious Optometric Glaucoma Society (OGS). The members of OGS are 70 of the world's most recognized optometric glaucoma researchers and educators in glaucoma. Most importantly our glaucoma management prioritizes the needs of each individual and the protection of vision.

As always, our emphasis is on our patients, realizing how important it is for you to have an excellent understanding of glaucoma and that we remain vigilant about answering your valuable questions.

The Glaucoma and Diabetes Eye Institute

Harper's Point Eye Associates

Get the facts about GLAUCOMA

Harper's Point Eye Associates

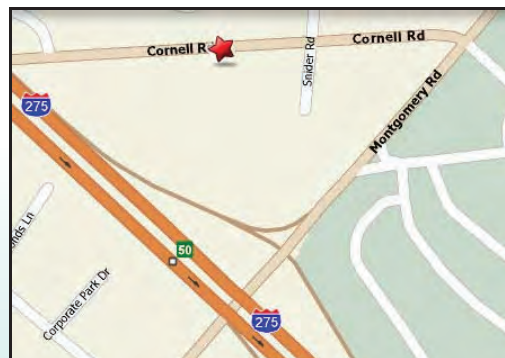
The Glaucoma and Diabetes Eye Institute

Elliot M. Kirstein, OD, FAAO
Todd A. Zelczak, OD, FAAO
Ralph R. Lim, DO
David M. Schneider, MD

8211 Cornell Road, Suite 510
Cincinnati, OH 45249

513.530.0440

www.harperspointeye.com



From I-275 take the Montgomery Rd Exit to the North. Turn left on Cornell Rd.

513.530.0440

www.harperspointeye.com

What is Glaucoma?

"Glaucoma" describes a whole group of diseases affecting the eye, but all share the common fact that they cause the pressure within the eye (the intraocular pressure) to be at unhealthy levels for the affected person. Because many different types of glaucoma exist, treatment depends upon the type of glaucoma as well as a variety of other factors. No matter whether the pressure is high, normal or below normal, nerve damage is still possible. Most types of glaucoma are chronic, and are present for the person's lifetime. Some types of glaucoma occur suddenly, but most develop slowly, over months or years.

Since the level of intraocular pressure does not indicate with certainty whether or not glaucoma is present, how can an accurate diagnosis be made? The answer is: "A diagnosis of glaucoma is made by detecting the presence of ocular tissue damage related to intraocular pressure." Most types of glaucoma need some form of treatment. Some people need surgery. Others may need medicine to treat the eye directly, or to treat some other health problem that is affecting the eye. Still others may need to have certain medicines stopped.

Appropriate treatment for glaucoma will prevent loss of sight in the majority of patients whose condition is detected early.

Glaucoma is dangerous because it has the potential to take all of your vision. Equally dangerous is the fact that it does so without you knowing it. It is very important to understand that glaucoma usually has no symptoms until its advanced stages at which the person has irreversibly lost a large part of their vision. Because early changes in glaucoma start with peripheral vision and often take many years to develop, patients may have good central vision, not "feel" anything, and assume their eyes are healthy.

Extreme Glaucoma



Advanced Glaucoma



Early Glaucoma



Normal Vision



Risk Factors in Glaucoma

Many varieties of glaucoma exist and can greatly differ in their presentation, progression and characteristics from person to person. Glaucoma diagnosis is based on risk factors as well as clinical testing monitored and repeated over time.

Risk factors include:

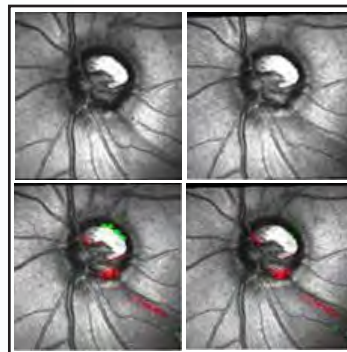
- Age
- Family History
- Elevated Eye Pressure
- Race
- Diabetes
- Low Blood Pressure or Pulse Rate
- History of Migraine Headaches
- Nearsightedness

Other risk factors such as high blood pressure and blood pressure medications are currently being researched in their relationship to glaucoma.

Testing of Glaucoma

Our doctors at Harper's Point Eye Associates have the most advanced technology available for the diagnosis, treatment, and management of glaucoma.

- Dynamic Contour Tonometry for the most accurate measurement of eye pressure
- Heidelberg Retinal Tomographer for optic nerve imaging and progression analysis
- Octopus Perimetry for visual field analysis
- Digital Photography
- Ultrasound biomicroscopic imaging of internal structures of the eye



Treatment of Glaucoma

Although other factors are clearly involved, treatment of glaucoma is primarily targeted toward reducing eye pressure. In most cases, initial treatment consists of topical instillation of medication eye drops, followed by laser procedures, and in advanced cases, ocular surgery to achieve optimum eye pressures. Topical medications used today are safer, more tolerable, more convenient, and more effective than those used as recently as fifteen to twenty years ago. Early diagnosis of glaucoma is essential in treatment success rates and result in lower incidence of risky surgery and vision loss.

Eye checkups at the Glaucoma and Diabetes Eye Institute on a regular basis helps our doctors identify risk factors and early clinical findings that can ensure early diagnosis and management of glaucoma as well as other eye conditions hopefully leading to a lifetime of healthy eyes and good vision.



Documentation of the optic nerve with the Heidelberg Laser Retinal Tomograph



Dr. Kirstein teaching NASA scientists how to measure eye pressure in zero gravity